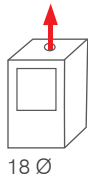




Windo 100

18 kW_470 m³_123x53xh135 cm

CHIMENEAS DE LEÑA
MONOBLOCOS A LENHA
ΕΣΤΙΕΣ ΞΥΛΟΥ
WOOD FIREPLACES

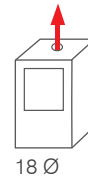


Ideales para instalación a ras del suelo
Ideais para instalações junto ao chão
Ιδανικό για εγκατάσταση απευθείας στο δάπεδο
Suitable for a flush-to-floor installation

Windo 120

19,2 kW_500 m³_143x53xh135 cm

CHIMENEAS DE LEÑA
MONOBLOCOS A LENHA
ΕΣΤΙΕΣ ΞΥΛΟΥ
WOOD FIREPLACES



Ideales para instalación a ras del suelo
Ideais para instalações junto ao chão
Ιδανικό για εγκατάσταση απευθείας στο δάπεδο
Suitable for a flush-to-floor installation



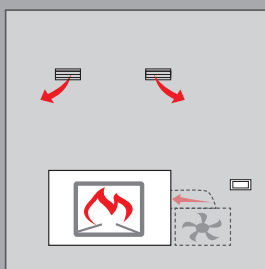
Energy
A⁺⁺
A⁺
A
B
C
D
E
F
G

_ Hogar en refractario blanco o negro
_ Câmara de combustão em refractário branco ou negro
_ Πυρίμαχη εστία λευκή ή μαύρη
_ Combustion chamber black or white refractory



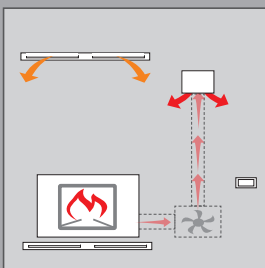
Energy
A⁺⁺
A⁺
A
B
C
D
E
F
G

_ Hogar en refractario blanco o negro
_ Câmara de combustão em refractário branco ou negro
_ Πυρίμαχη εστία λευκή ή μαύρη
_ Combustion chamber black or white refractory

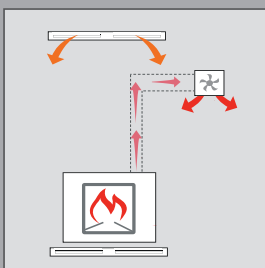


OPTIONAL

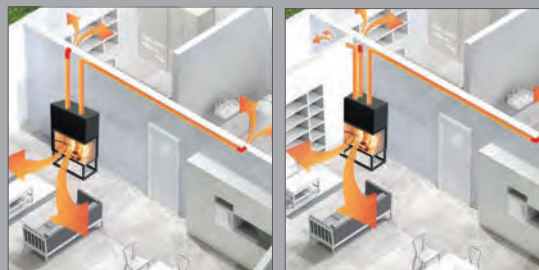
kit de ventilación con regulador electrónico y telemando.
kit de ventilação com regulador electrónico e telecomando.
ΚΙΤ ανεμιστήρα και τηλεχειριστηρίου.
Fan kit with remote and electronic controller.



OPTIONAL:
KIT AIR DIFFUSER



OPTIONAL:
Basic V, Split V, Bent V,
Sharp V, Origami V



OPTIONAL:
KIT 1 BIS - 2 BIS - 3 BIS - 4 BIS - 5 BIS